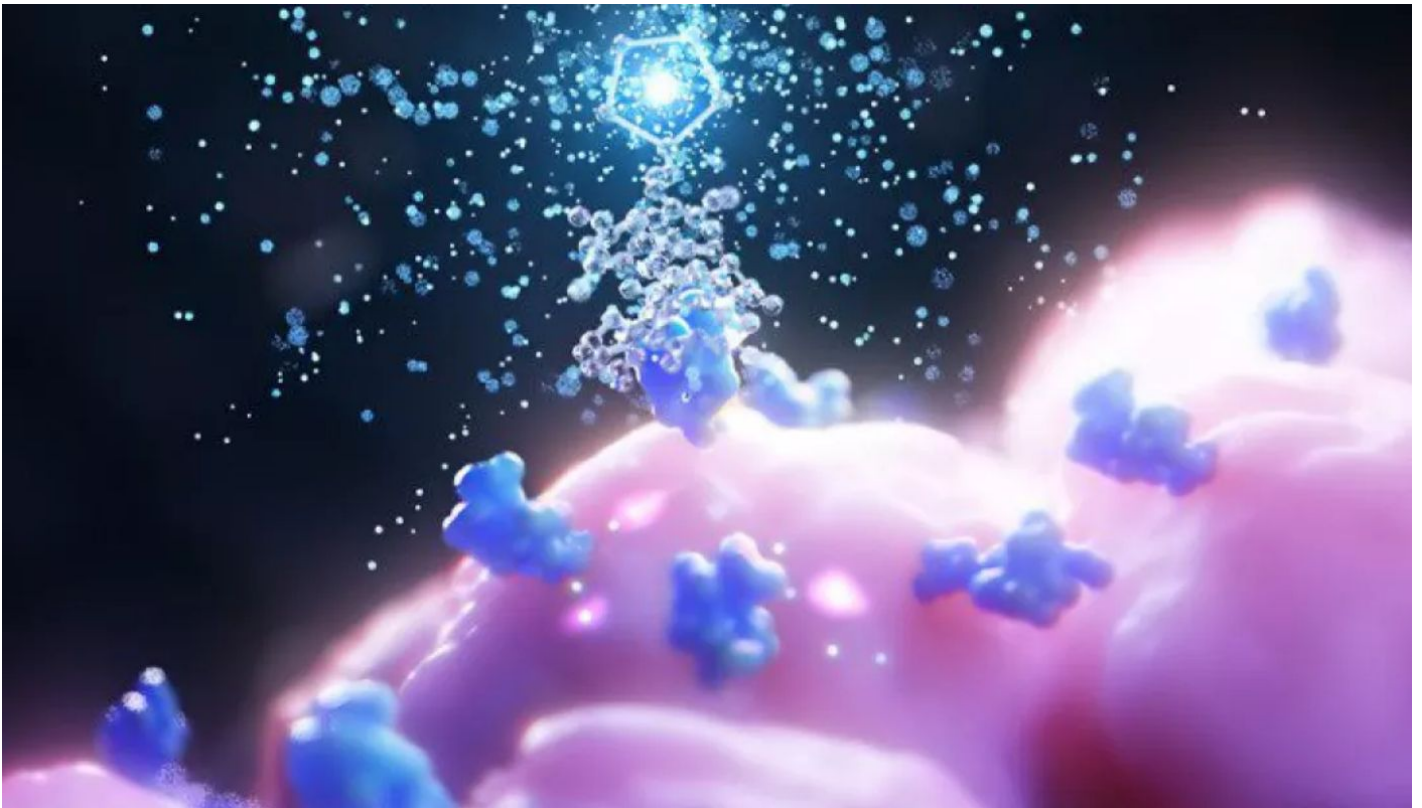


Partnering - Radioligand therapy



We are committed to reimagining cancer care by pushing the boundaries of innovation with bold science, like targeted radioligand therapy (RLT) for patients with advanced cancers.

[Learn more](#)

Source URL: <https://prod1.novartis.com/node/600056>

List of links present in page

1. <https://prod1.novartis.com/node/600056>
2. <https://prod1.novartis.com/partnering/partnering-opportunities#tabtechnology-platforms-205376>
3. <https://prod1.novartis.com/node/600056/printable/print>
4. <https://prod1.novartis.com/node/600056/printable/pdf>